

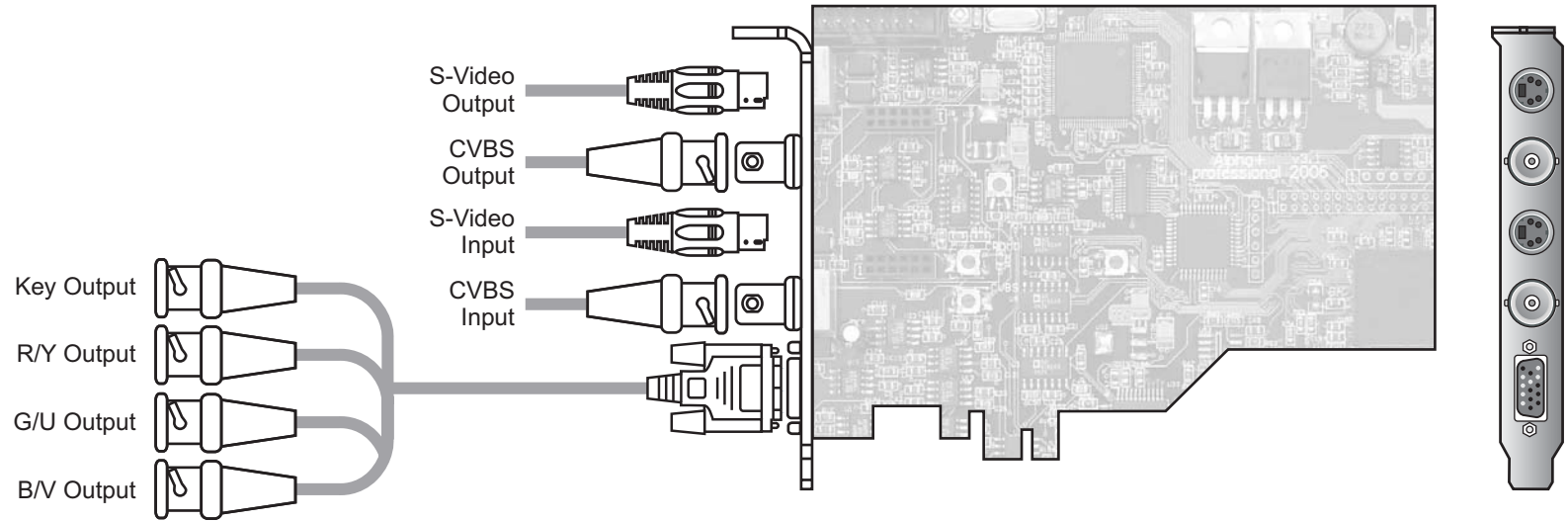
## STREAM ALPHA CARDS GENERAL CHARACTERISTICS COMPARATIVE TABLE

Hardware characteristics for Stream Alpha video composition system models	Stream ALPHA Plus	Stream ALPHA Plus YUV	Stream ALPHA Component	Stream WIND SDI	Stream WIND SDI II <b>SOON!</b>	Stream ALPHA SDI
Title, graphics and animation overlay on transmitted video	+	+	+		+	+
Alpha-channel mixing ("soft" key)	+	+	+	+	+	+
Channel transformation mode (transcoding)	+	+	+			+
"Relay bypass" in case of PC electrical supply failure	Composite / S-Video	Composite / S-Video	YUV	-	SD-SDI	SD-SDI
Service information storage (teletext etc.) in the area of frame blanking pulse of transmitted video signal	+	+	+		+	+
Colour depth	4:2:2 YUV, 8 bit	4:2:2 YUV, 8 bit	4:2:2 YUV, 8 bit	4:2:2 YUV, 10 bit	4:2:2 YUV, 10 bit	4:2:2 YUV, 10 bit
Mixing on external mixer through CVBS, S-Video and Key – mixer inputs (DSK)	+	+				+
Mixing on external mixer through YUV and Key – mixer inputs (DSK)		+	+			+
Mixing on external mixer through SDI and Key – mixer inputs (DSK)				+	+	+
Number of video layers on hardware level	2	2	2	1	2	2
Preview channel	+	+	+	+	+	+
CVBS PAL/SECAM/NTSC input	+	+				+
S-Video PAL/SECAM/NTSC input	+	+				
YUV input			+			+
SD-SDI (SMPTE 259M and ITU-R BT.601) PAL/NTSC input					+	+

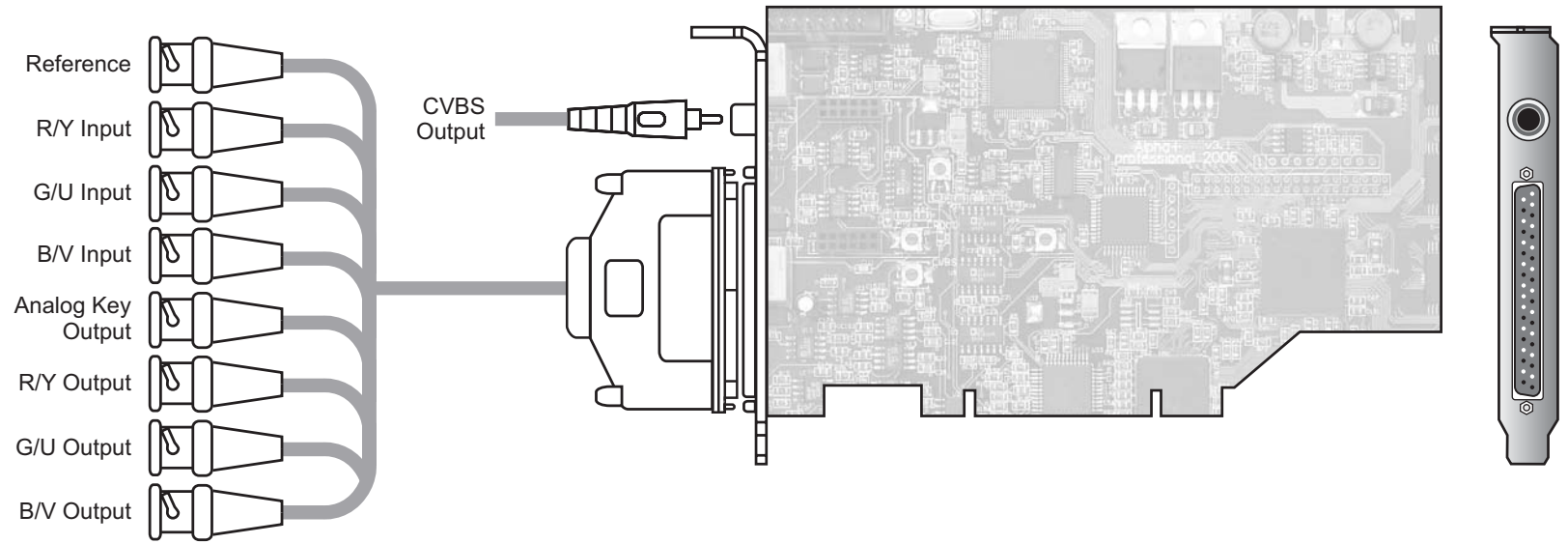
## STREAM ALPHA CARDS GENERAL CHARACTERISTICS COMPARATIVE TABLE

Hardware characteristics for Stream Alpha video composition system models	Stream ALPHA Plus	Stream ALPHA Plus YUV	Stream ALPHA Component	Stream WIND SDI	Stream WIND SDI II <b>SOON!</b>	Stream ALPHA SDI
External synchronization input (genlock)	Analog Video Input (Blackburst Input)	Analog Video Input (Blackburst Input)	Analog Video Input (Blackburst Input)	Analog Video Input (Blackburst Input)	SDI / Analog Video Input (Blackburst Input)	SDI / Analog Video Input (Blackburst Input)
CVBS PAL/NTSC output	+	+	+	+	+	+
CVBS SECAM output	+	+				
S-Video PAL/SECAM/NTSC output	+	+				
YUV output		+	+			+
SD-SDI (SMPTE 259M and ITU-R BT.601) PAL/NTSC output				+	+	+
Alpha-channel with composite sync pulse analog linear key DSK signal	+	+	+			+
Alpha-channel with composite sync pulse digital linear key DSK signal				+	+	+
PCI interface	PCI Express 1x	PCI Express 1x	PCI-33 MHz	PCI-33 MHz	PCI Express 1x	PCI-33 MHz
Software	Control Program (Windows 2000/XP™)					

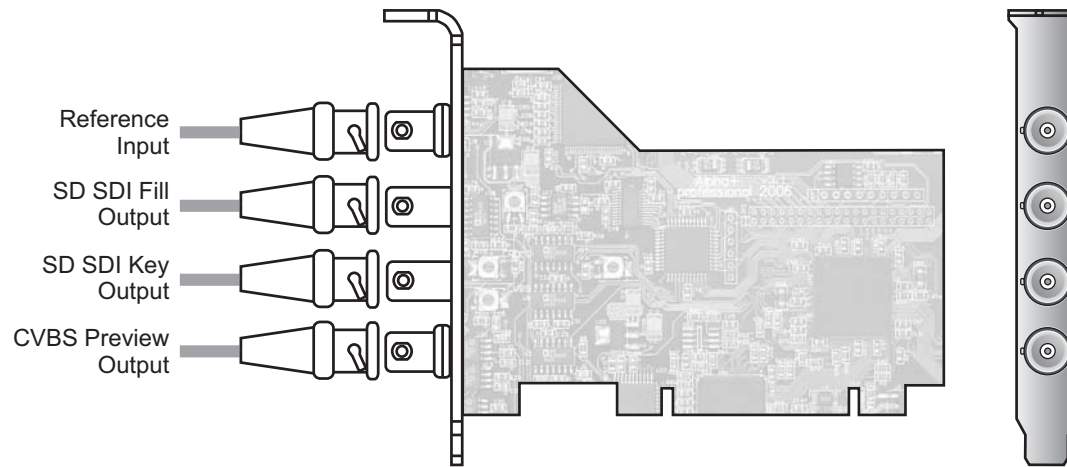
# Stream ALPHA Plus YUV



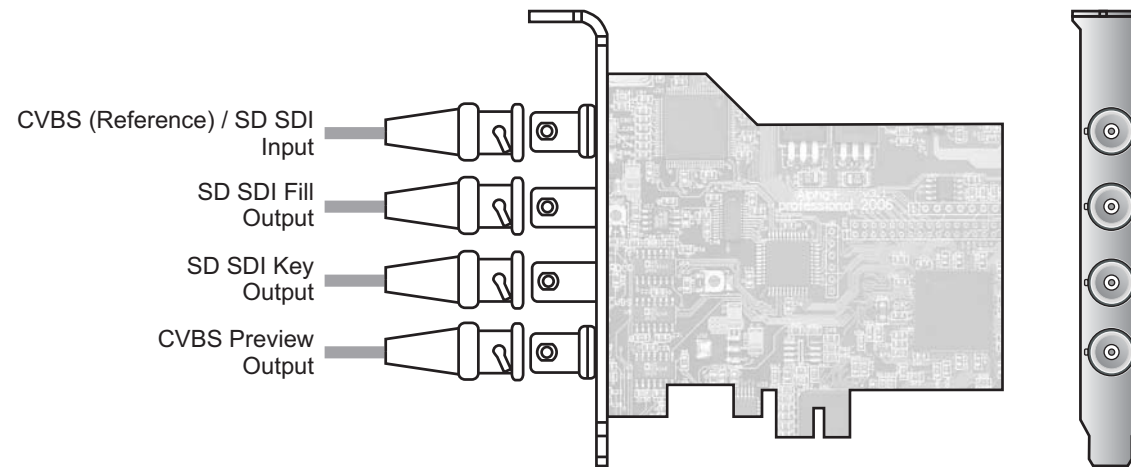
# Stream ALPHA Component



## Stream WIND SDI



## Stream WIND SDI II



# Stream ALPHA SDI

